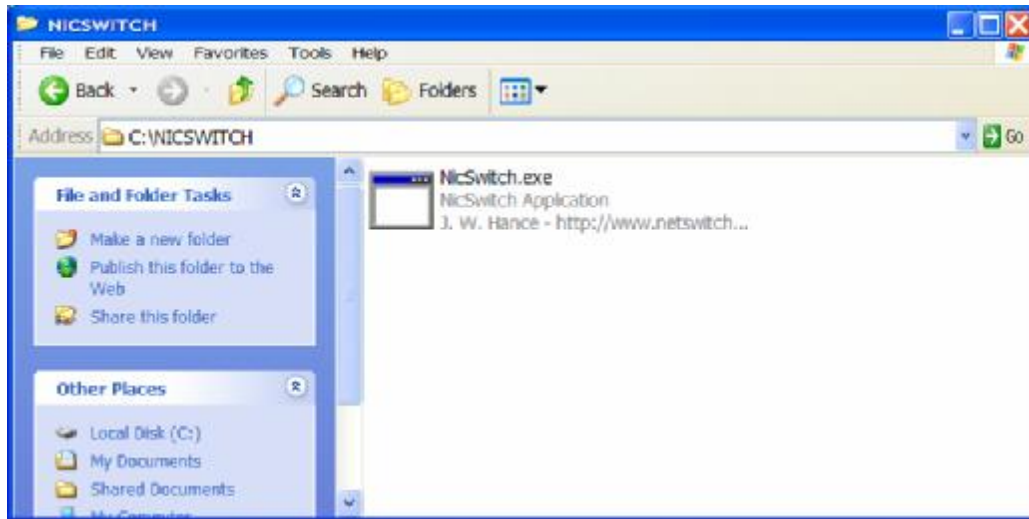


NicSwitch Installation (BETA V1.0)

1. Download the ZIP file from the web site at:

http://www.netswitcher.com/downloads/nicswitch_1_0.zip

2. Open the downloaded file and extract the EXE file to a convenient location. The recommended location is C:\NICSWITCH but you can choose another location if desired. The rest of these instructions, however, assume that the EXE file is now located in C:\NICSWITCH:



3. Open a CMD.EXE window and CD to C:\NICSWITCH:

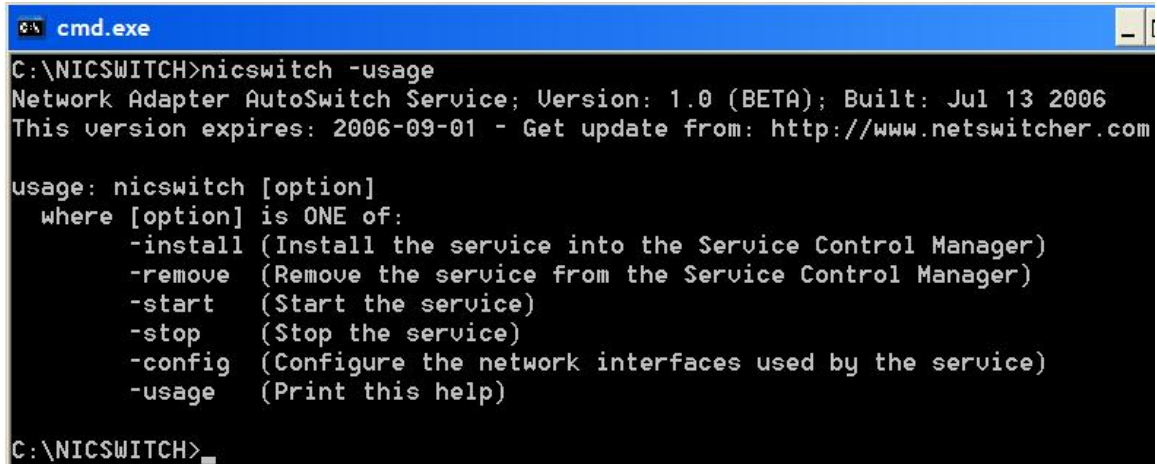
```
cmd.exe
C:\>cd \nicswitch
C:\NICSWITCH>dir
Volume in drive C has no label.
Volume Serial Number is 4435-6D71

Directory of C:\NICSWITCH

07/13/2006  02:59 PM    <DIR>          .
07/13/2006  02:59 PM    <DIR>          ..
07/13/2006  02:48 PM                61,440 NicSwitch.exe
                1 File(s)        61,440 bytes
                2 Dir(s)    202,607,587,328 bytes free

C:\NICSWITCH>_
```

4. Type: `nicswitch -usage` for usage help:

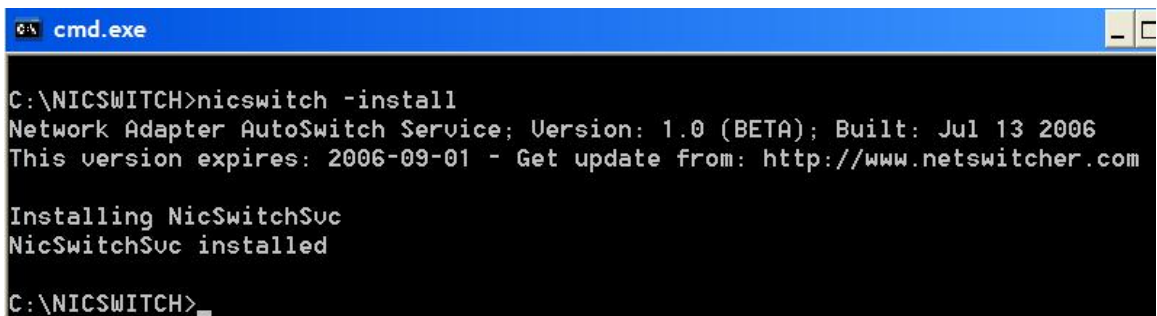


```
cmd.exe
C:\NICSWITCH>nicswitch -usage
Network Adapter AutoSwitch Service; Version: 1.0 (BETA); Built: Jul 13 2006
This version expires: 2006-09-01 - Get update from: http://www.netswitcher.com

usage: nicswitch [option]
       where [option] is ONE of:
       -install (Install the service into the Service Control Manager)
       -remove  (Remove the service from the Service Control Manager)
       -start   (Start the service)
       -stop    (Stop the service)
       -config  (Configure the network interfaces used by the service)
       -usage   (Print this help)

C:\NICSWITCH>
```

5. Type: `nicswitch -install` to install the service:

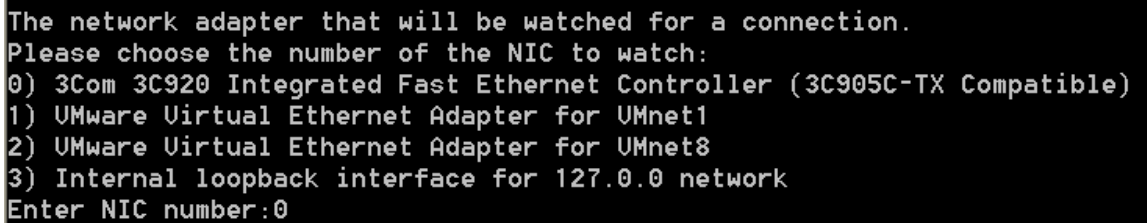


```
cmd.exe
C:\NICSWITCH>nicswitch -install
Network Adapter AutoSwitch Service; Version: 1.0 (BETA); Built: Jul 13 2006
This version expires: 2006-09-01 - Get update from: http://www.netswitcher.com

Installing NicSwitchSvc
NicSwitchSvc installed

C:\NICSWITCH>
```

6. Type: `nicswitcher -config` to configure the service. There are 2 prompts here, the first is for the network adapter which will be WATCHED for a connection. Usually this will be your WIRED network adapter. Note that your list of adapters will almost certainly be different. Choose the number of the adapter that you want watched for a connection:



```
The network adapter that will be watched for a connection.
Please choose the number of the NIC to watch:
0) 3Com 3C920 Integrated Fast Ethernet Controller (3C905C-TX Compatible)
1) VMware Virtual Ethernet Adapter for VMnet1
2) VMware Virtual Ethernet Adapter for VMnet8
3) Internal loopback interface for 127.0.0 network
Enter NIC number:0
```

Here I chose the 3Com 9C920 network adapter in my system. It is numbered “0” so I entered the number 0 and pressed Enter.

Next you want to specify the CONTROLLED adapter. This is the adapter you want to disable when the watched adapter is connected and that you then want enabled when the watched adapter is not connected. Usually this will be your WIRELESS adapter:

```
The network adapter that will be controlled.
Please choose the number of the NIC to control:
0) 3Com 3C920 Integrated Fast Ethernet Controller (3C905C-TX Compatible)
1) WAN Miniport (L2TP)
2) WAN Miniport (Network Monitor)
3) WAN Miniport (IP)
4) WAN Miniport (PPPOE)
5) WAN Miniport (PPTP)
6) Direct Parallel
7) WAN Miniport (ATM)
8) VMware Virtual Ethernet Adapter for VMnet1
9) VMware Virtual Ethernet Adapter for VMnet8
10) Hawking Technologies HWU54D Hi-Gain Wireless-G USB Adapter
11) 1394 Net Adapter
Enter NIC number:10_
```

Here I chose my Hawking HWU54D Wireless-G adapter, which is number 10. So I entered the number 10 and hit Enter. Note that there are some adapters that you probably would never want to choose here, but if you have a need to, I suppose it's possible. Do NOT, however, choose the same adapter that you chose in the previous step, namely the 3Com 3C920 adapter. It would not make sense to watch and control the same adapter. Ok, you've been warned.

7. Things are now ready to go, the last step in setup is to type: `nicswitch -start` to actually start the service. Once this is done the service will run automatically, even after you reboot your machine:

```
C:\NICSWITCH>nicswitch -start
Network Adapter AutoSwitch Service; Version: 1.0 (BETA); Built: Jul 13 2006
This version expires: 2006-09-01 - Get update from: http://www.netswitcher.com

Starting NicSwitchSvc
NicSwitchSvc started successfully.
```

8. If you need or want to uninstall this software, simply type the following:

```
nicswitch -stop
nicswitch -remove
```

The first command will stop the service and the second will remove it from the Windows services database. If your network adapters change you can run the configure option again by following the instructions in step #6 again. Note that if

you do change adapters you will either need to stop/start the service (as above) or reboot your machine before that becomes effective.

9. Any messages that the software needs to report will be found in the Windows EVENT VIEWER. Open your control panel and then the Computer Management and the Event Viewer item. The Application log will show any messages relevant to this application.